



FEATURES

- Antares 4.0 compatible
- Stand Alone System
- Low power consumption
- Progressive scan CMOS sensor technology
- VGA resolution - 640x480 pixels
- Frame Rate: Up to 60 fps
- Integrated led illuminator and optics
- Superior price performance

Typical Applications

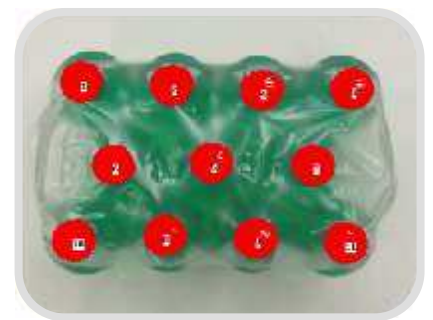
BARCODE



Inspection



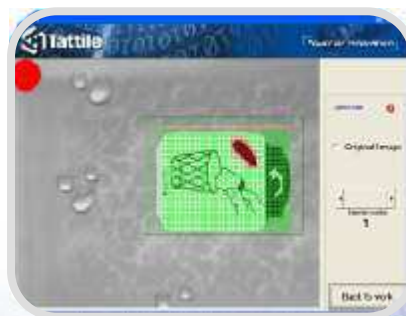
Blob Analysis



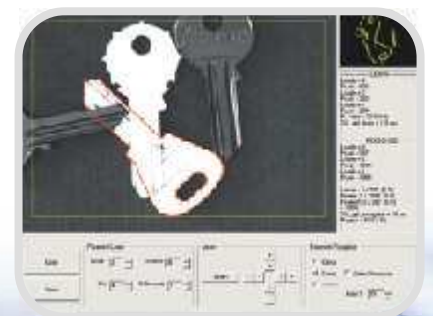
Color Analysis



Print Control



Pattern Recognition





SOFTWARE FEATURES	
OPERATING SYSTEM	
Proprietary Tattile O.S. - TOS	Multitask Operating System for custom applications
PROGRAMMING LANGUAGES	
Programming	Antares
COMMUNICATION	
Firmware Update	Ethernet or serial capabilities
UDP	UDP/IP, RS -232 or RS-485

TECHNICAL FEATURES	
SYSTEM	
Microprocessor	Analog Devices® Blackfin® Technology
Analysis	60 Fps
Synchronization	External trigger without delay
Software	Antares 4.0
CAMERA	
Sensor	BW CMOS ""
Acquisition	Progressive scan
Resolution	VGA (640x480 pixels)
Frame rate	Up to 60 Fps
Lighter	Integrated circular led lighter
Lens	11 mm (F 2.5) - Integrated lens
DIGITAL I/Os	
Input	1 trigger PNP optoisolated input 24Vdc
Input	2 PNP optoisolated inputs 24 Vdc
Output	1 current output for external lighter management
Output	3 PNP optoisolated outputs 24 Vdc
COMMUNICATION	
Ethernet 10/100 Mbps	UDP (User Datagram Protocol) standard
RS 232 - 485	1 line half duplex, baud rate 1200:115.200
ENVIRONMENTAL	
Operating Temp.	-10° to 50° C
Operating Humid.	10 to 90% non cond.
Storage Temp.	-20° to 65° C
Storage Humidity	10 to 90% non cond.
Power Supply	24 Vdc ±10% 3W
Package Body	Anodized Aluminum
Size / Weight	107 x 58 x 37 mm (L x H x W) - 230 g
IP Protection	IP 42

External Strobe with jack connector



Antares 4.0



Programming Language



Standard Connectors