



B/W or Color CCD



Local storage on SD memory card



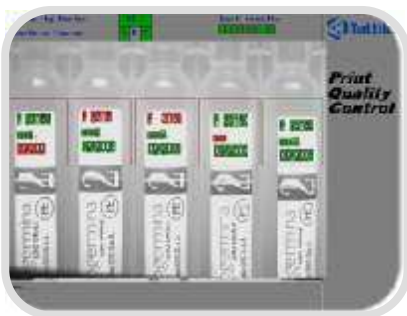
Linux Available

FEATURES

- Stand alone complete vision system
- Fully IP addressable
- Low power consumption
- Progressive scan CCD sensor technology
- 640x480 or 1024 x 768 pixels resolution
- Connection via Fast Ethernet 100 Mbps
- Optimized vision library
- Open system to port your own C application
- Intuitive graphical development environment
- Secure Digital removable storage media

Typical Applications

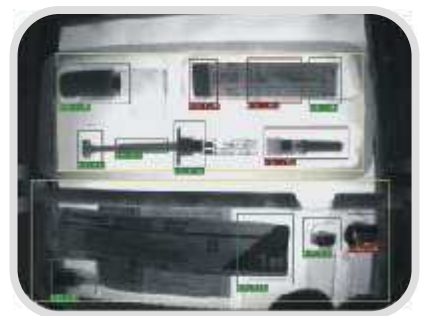
OCR/OCV



Inspection



Blob Analysis



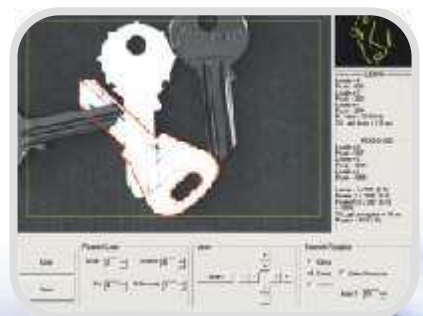
Color Analysis



Surface Inspections



Pattern Recognition



SOFTWARE FEATURES

OPERATING SYSTEM	
Proprietary Tattile O.S. - TOS	Multitask Operating System for custom application
Linux	Real time Linux embedded
PROGRAMMING LANGUAGES	
Antares Explorer	Intuitive graphical development environment with optimized vision library
Ansi C	Standard C environment
ARM Assembler	ARM Assembler environment
COMMUNICATION	
Firmware Update	Updatable via Ethernet or serial ports
Data Exchange	TCP/IP, UDP/IP, RS232 or RS485
CUSTOMIZING TOOLS	
Custom Tool	Ability to add custom C functions to the standard Antares development environment with direct access to TIL (Tattile Image Library)
Custom Program	You can write a complete new C application program
Software Porting	Software team to support the porting of your new or existing applications



Standard connectors and slot for SD memory card



Multitasking
O.S. On Board

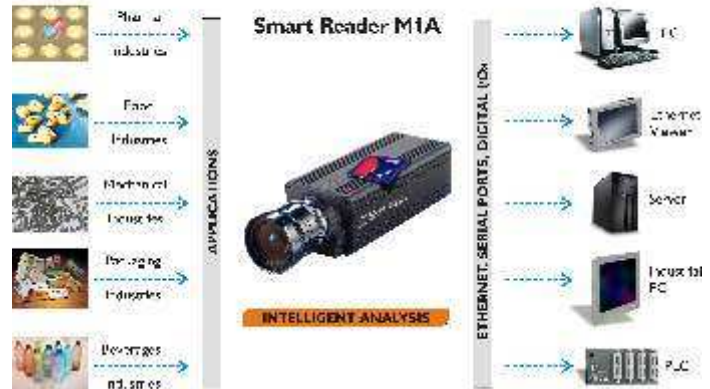


Smart Reader M1A (front view)
with C Mount support



Programming
Language

INTELLIGENT CAMERA



TECHNICAL FEATURES

SYSTEM	
Microprocessor	Intel® XScale® @ 733 MHz.
FPGA	Field Programmable Gate Array Altera® APEX®
Analysis	Up to 30 Fps
Synchronization	External trigger without delay
Software	Antares engine or custom C program
CAMERA	
Sensor	BW or Color CCD
Acquisition	Progressive scan
Resolution	640 x 480 (VGA) or 1024 x 768 (XVGA) pixels
Frame rate	30fps @ VGA resolution; 15fps @ XVGA resolution
DIGITAL I/O	
Input	2 optoisolated inputs 24 Vdc
Output	3 PNP optoisolated outputs 24 Vdc
COMMUNICATION	
Ethernet 10/100 Mbps	TCP, UDP, FTP, HTTP
RS 232	1 line baud rate 1200:115200
RS 485	1 line half duplex baud rate 1200:115200
SD Interface	Supports all mass memories (transfer rate 1 MB/s)
ENVIRONMENTAL	
Operating Temp.	-10° to 50° C
Operating Humid.	10 to 90% non cond.
Storage Temp.	-20° to 65° C
Storage Humidity	10 to 90% non cond.
Power Supply	12 to 32Vdc ± 5% 5W
Package body	Anodized aluminum
Size / Weight	145 x 55 x 42 mm (L x H x W) - 175 g (only body)
Lens	C mount related to application
Protection level	IP 42