

FEATURES

B/W or Color CCD



Local Storage on SD memory card



Linux Available

- Stand alone complete vision system
- Fully IP addressable
- Low power consumption
- Progressive scan CCD sensor technology
- High Resolution up to 1600x1200 BW or Color
- Connection via Gigabit Ethernet
- Optimized vision library
- Open system to port your own C application
- Intuitive graphical development environment
- Secure Digital removable storage media

Typical Applications

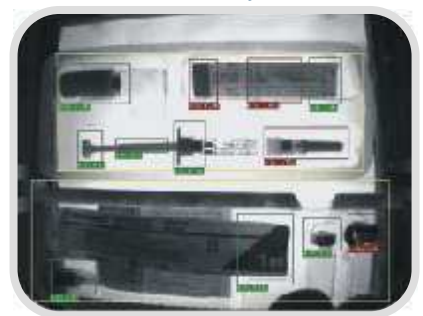
OCR/OCV



Inspection



Blob Analysis



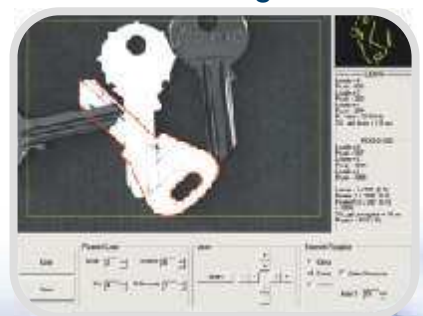
Color Analysis



Surface Inspections



Pattern Recognition



SOFTWARE FEATURES

OPERATING SYSTEM	
Proprietary Tattile O.S. – TOS	Multitasking Operating System for custom application
Linux	Real time Linux embedded
PROGRAMMING LANGUAGES	
Antares Explorer	Intuitive graphical development environment with optimized vision library
Ansi C	Standard C environment
ARM Assembler	ARM Assembler environment
COMMUNICATION	
Firmware Update	Updatable via Ethernet or serial ports
Data Exchange	TCP/IP, UDP/IP, RS232 or RS485
CUSTOMIZING TOOLS	
Custom Tool	Ability to add custom C functions to the standard Antares development environment with direct access to TIL (Tattile Image Library)
Custom Program	You can write a complete new C application program
Software Porting	Software team to support the porting of your new or existing applications



Standard connectors and slot for SD memory card



Multitasking
O.S. On Board



Programming
Language



Audio Input/Output, Strobo,
Auto Iris electronic and manual

INTELLIGENT CAMERA



TECHNICAL FEATURES

SYSTEM	
Microprocessor	Intel® XScale® @ 733 MHz
Co-processor	Analog Devices@Blackfin® Symmetric Multi-Processor
FPGA	Altera® Stratix® (25000 Logic Elements)
Analysis	Up to 60 Fps
Synchronization	External trigger without delay
CAMERA	
Sensor	BW or Color CCD
Acquisition	Progressive scan
Resolution	Up to 1600x1200
Audio Input	1 audio input 1,8 Vpp ZIN=12K
Audio Output	1 mono audio output
Auto IRIS	Electronic/manual
Frame rate	60fps @ VGA ; 15fps @ 1600x1200
DIGITAL I/O	
Input	2 optoisolated inputs 24 Vdc
Output	3 PNP optoisolated outputs 24 Vdc
Strobe Output	1 open collector fast strobe out
COMMUNICATION	
Ethernet 10/100/1000	TCP, UDP, FTP, HTTP
RS 232	1 line baud rate 1200:115200
RS 485	1 line half duplex baud rate 1200:115200
SD Interface	Supports all mass memories (transfer rate 1 MB/s)
ENVIRONMENTAL	
Operating Temp.	-10° to 50°C
Operating Humid.	10 to 90% non cond.
Storage Temp.	-20° to 65°C
Storage Humidity	10 to 90% non cond.
Power Supply	12 to 32Vdc± 5% 7W
Package body	Anodized aluminium
Size / Weight	142,5 x 49,5 x 60 mm (L x H x W) - 430 g (only body)
Lens	C mount related to application
Protection level	IP 42