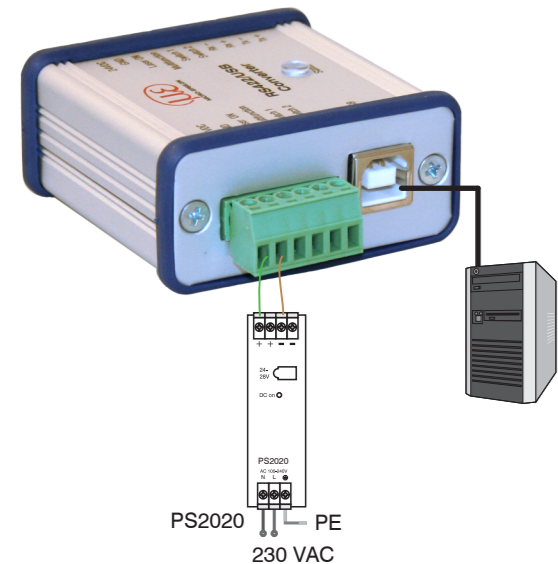


## Wiring Recommendations

for sensors

- of optoNCDT ILD1220 / 1320 / 1420 / 1750 / 1900 / 2300 series
- of optoNCDT ILR2250 series
- of optoCONTROL 2500 / 2600 / 2520 series
- of confocal DT24xx series
- of interferoMETER IMS5x00 series
- of colorCONTROL MFA-7/14/21/28 series



Connections for supply/control

- ▶ Connect the converter to a power supply unit <sup>1</sup>, for example PS2020.
- ▶ Connect the converter to a free USB interface to start the driver installation, see Chap. Installation USB Driver, also.

1) Not required with optoCONTROL 2xxx sensors.



Sensor connections

- PCF1420-x/I
- PC1700-x
- PC1900-x/OE
- PC2300-x/OE
- PC2300-x/SUB-D + PC2300-0.5/Y
- SCD2500-x/RS422
- PC/SC2520-x
- PC2250-x
- SC2471-x/RS422/OE
- CAB-M12-8P-co-straight; 2m-PUR; open ends

## RS422 Connections to 6-Pole Terminal Block

Terminal Converter	Wiring
24 VDC	24 VDC
GND	GND
Laser ON	Laser ON
Multifunction	
Switch 1	
Switch 2	

- ▶ Connect GND with Laser ON to permanently activate the laser light source in the sensor <sup>1</sup>.

1) Not required with optoCONTROL 2xxx sensors.

## RS422 Connections to 10-Pole Terminal Block

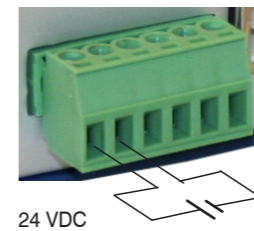
Terminal Converter	ILD1220 ILD1320	ILD1420	ILD1750	ILD1900	ILD2300	ODC2500 ODC2600	ODC2520	ILR2250	IMS5x00 IFC24xx	MFA -7/14/21/28
	Direct connection	PCF1420-x/I	PC1700-x	PC1900-x/OE	PC2300/OE PC2300-0.5/Y	SCD2500-x/ RS422	PC/SC2520-x	PC2250-x	SC2471-x/ RS422/OE	CAB-M12-8P- St-ge;2m-PUR
Tx+	Green	Green	Gray	Green	Blue	Yellow	Brown	White	Brown	Gray
Tx-	Yellow	Yellow	Yellow	Yellow	Red	Green	Green	Brown	Green	Pink
Rx+	Gray	Gray	Green	Gray	Black	White	Gray	Pink	Gray	Red
Rx-	Pink	Pink	Brown	Pink	Purple	Brown	Yellow	Gray	White	Blue
Switch 2	n.c.	n.c.	Purple	White	-	-	-	-	-	-
Switch 1	Brown	Brown	Gray-pink	Brown	-	-	-	-	-	-
Multifunction	Purple	Purple	White-green	Purple	-	-	-	-	-	-
Laser ON	Black	Black	Red-blue	Black	-	-	-	-	-	-
GND	Blue	Blue	Black	Blue	Brown	-	Black	Red/blue	Yellow	White
24 VDC	Red	Red	Red	Red	White	-	Red	Red	<sup>2</sup>	Brown

2) Supply voltage is supplied individually.

## Power Supply

Nominal value: 24 VDC

- ▶ Switch on the power supply unit <sup>1</sup>, once wiring is completed.
- ▶ Connect the 24 VDC and GND inputs at the converter with a 24 V power supply.



Supply voltage connection

**i** Voltage supply only for measuring devices, not to be used for drives or similar sources of impulse interference at the same time. MICRO-EPSILON recommends using the optionally available PS2020 power supply unit.

1) Not required with optoCONTROL 2xxx sensors.



Assembly Instructions  
**IF2001/USB**  
**1-Channel RS422/  
USB Converter**



## Installation of USB Driver

➤ Install the corresponding FTDI Virtual COM Port Driver before you use the converter for the first time.

You can find the current driver at:

[http://www.micro-epsilon.de/download/drivers/FTDI\\_VCP\\_Driver.zip](http://www.micro-epsilon.de/download/drivers/FTDI_VCP_Driver.zip)

➤ Now install the driver as follows: <sup>1)</sup>

➤ Unpack the driver (.zip file).

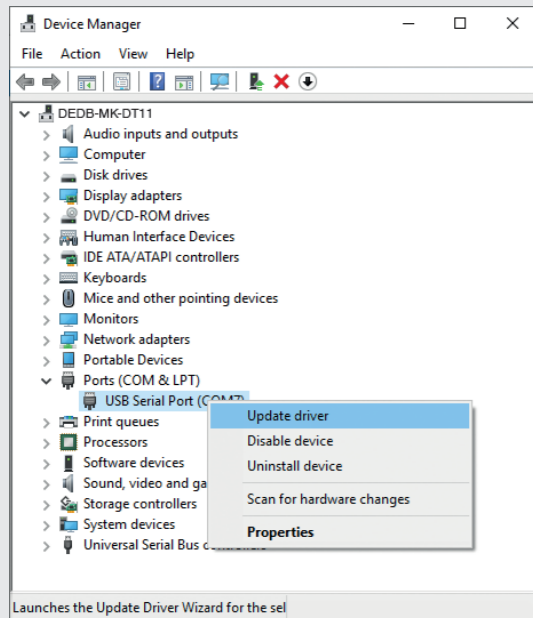
➤ Connect the sensor/controller with the USB converter.

➤ Connect the USB converter with a free USB port of a PC/notebook.

➤ Connect the converter with a power supply.

➤ Start the device manager under Control Panel > Hardware and Sound > Devices and Printers > Device Manager.

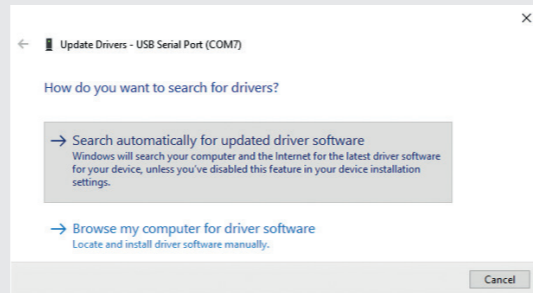
➤ Right-click the entry USB Serial Port and select Update driver.



A window opens where you can choose among two possibilities:

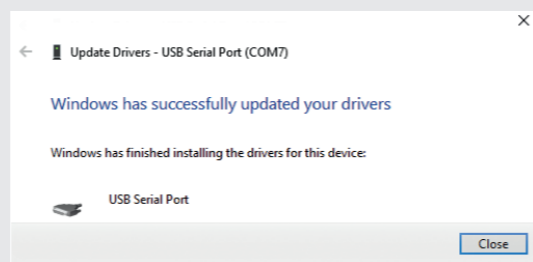
### Automatic Installation

➤ Choose Search automatically for updated driver software.



Windows will search your computer and the internet for the latest driver software for your device, unless you have disabled this feature in your device installation settings.

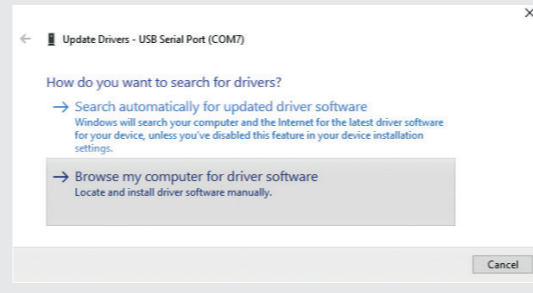
The routine now starts the installation of the driver.  
➤ Click on the Close button to complete the installation.



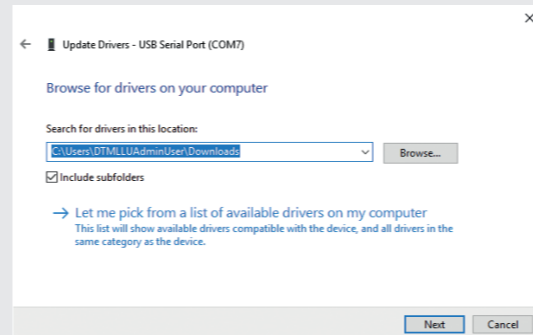
### Manual Installation

Locate and install the driver software manually.

➤ Choose Browse my computer for driver software.



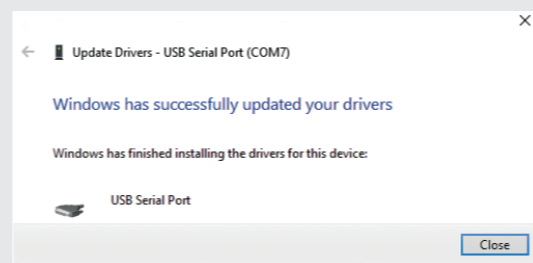
➤ Now use Browse to find the driver in the path where you saved it when you downloaded it from the web page.



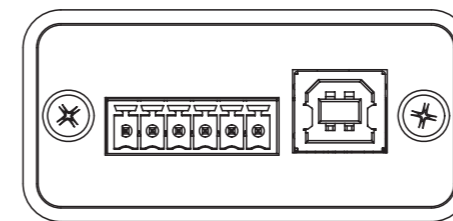
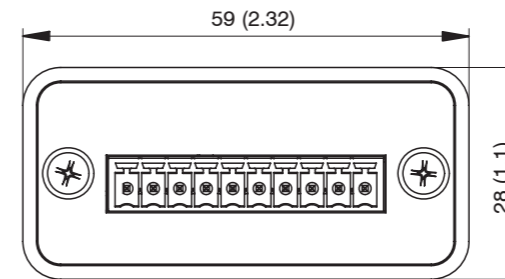
➤ Go to Next.

The routine now starts the installation of the driver.

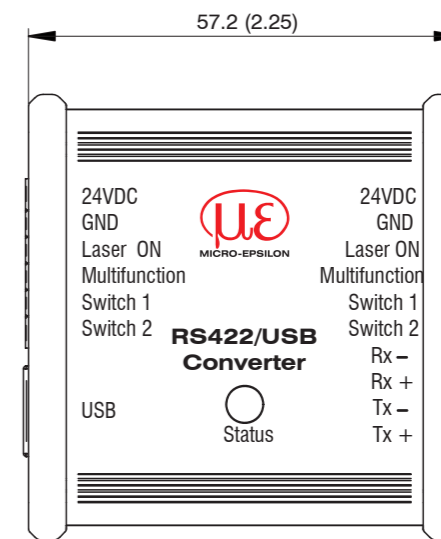
➤ Click on Close button to complete the installation.



## Dimensional Drawing



Dimensions in mm (inches)



### Unpacking, Included in Delivery

- 1 IF2001/USB converter
- 1 USB cable
- 1 Assembly instructions

MICRO-EPSILON MESSTECHNIK GmbH & Co. KG  
Koenigbacher Str. 15 • 94469 Ortenburg / Germany  
Tel. +49 8542 / 168-0 • Fax +49 8542 / 168-90  
info@micro-epsilon.com • www.micro-epsilon.com

Your local contact: [www.micro-epsilon.com/contact/worldwide/](http://www.micro-epsilon.com/contact/worldwide/)

1) Valid for Windows 10